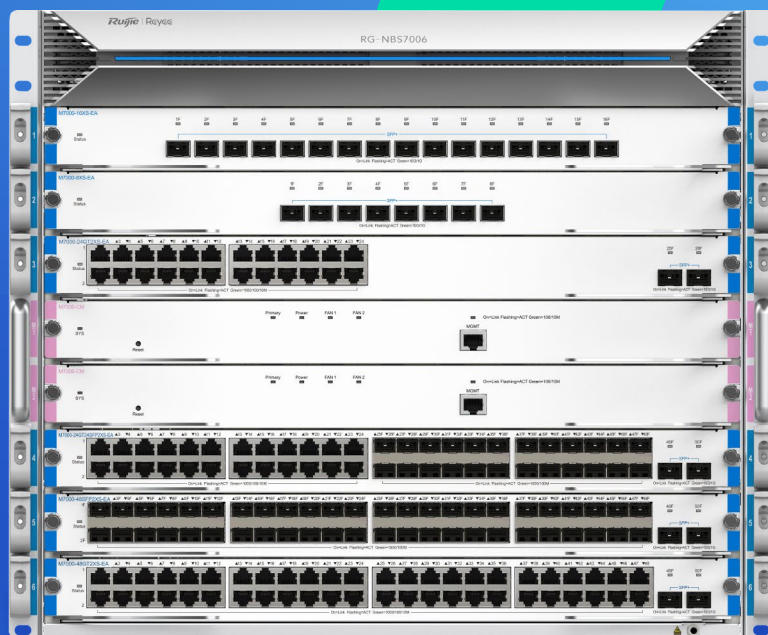


RG-NBS7006

Layer 3 Chassis Cloud Managed Switch

DATASHEET



Highlights

- Modular design provides scalability and flexibility
- High-level redundancy, ensuring nonstop service
- Whole network solution specially designed for SMB Scenarios
- Lifetime management on Ruijie Cloud at anytime anywhere

Highlight Features

RG-NBS7006 Reyee First Chassis Switch Designed for SMB

6 x 1RU Slot
2 x Supervisor Engine Module



7 Optional Line Cards



MAC 32,000
MAC Address



ARP 8,000
ARP Table



1.92 Tbps
Switching Capacity



1440 Mpps
Packet Forwarding Rate

Modular Design: Scalability, and Flexibility

Support 7 types of line cards, up to 96 ports full 10 Gigabit

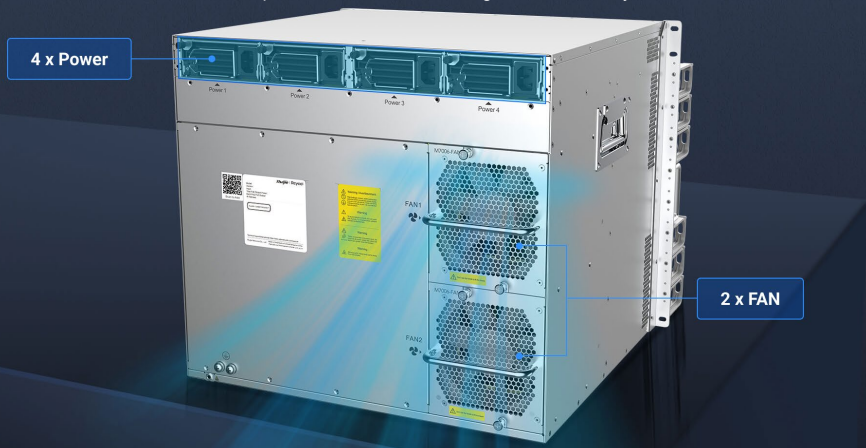


High-Level Redundancy, Ensuring Nonstop Service

Redundant Modules

Virtual Cluster Switching (VCS)

4 power slots & 2 fans: ensuing service continuity

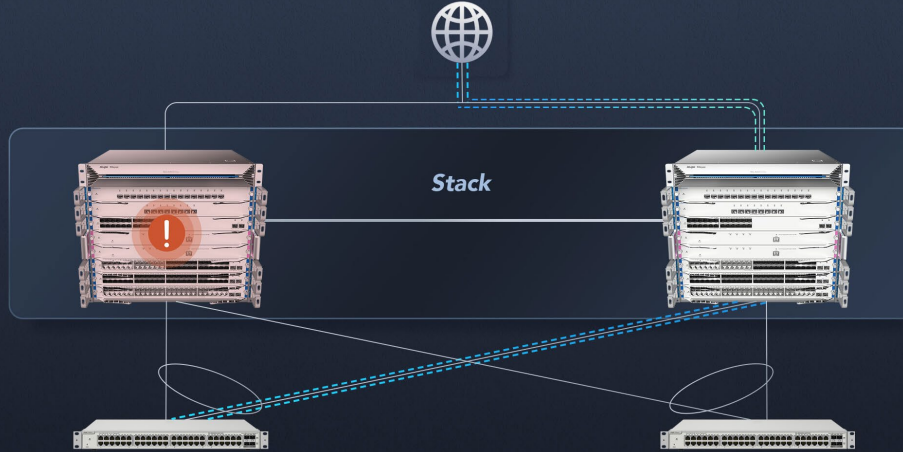


Highlight Features

High-Level Redundancy, Ensuring Nonstop Service

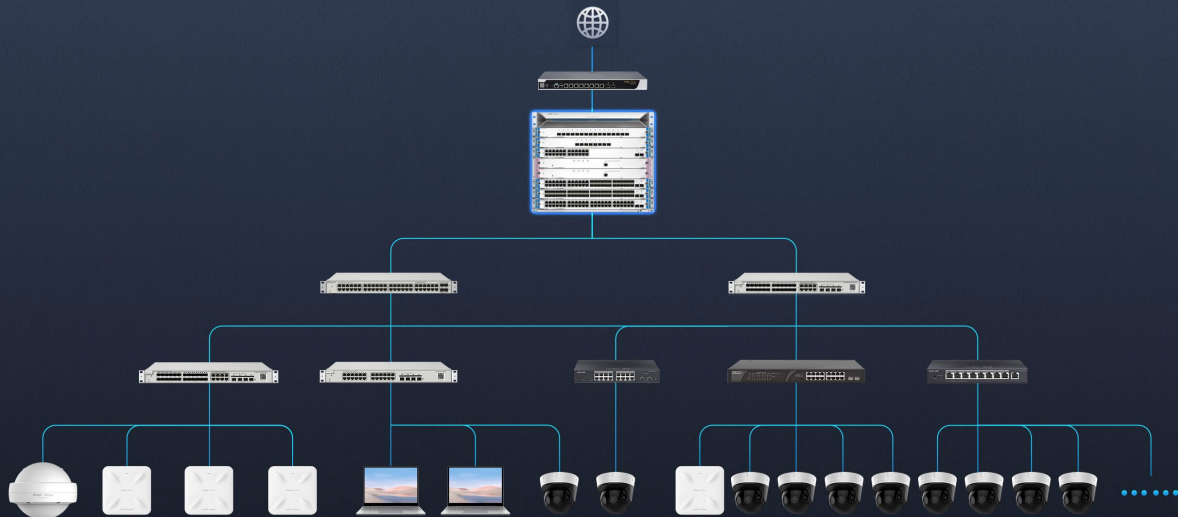
Redundant Modules Virtual Cluster Switching (VCS)

Virtual Cluster Switching (VCS): service failover within seconds



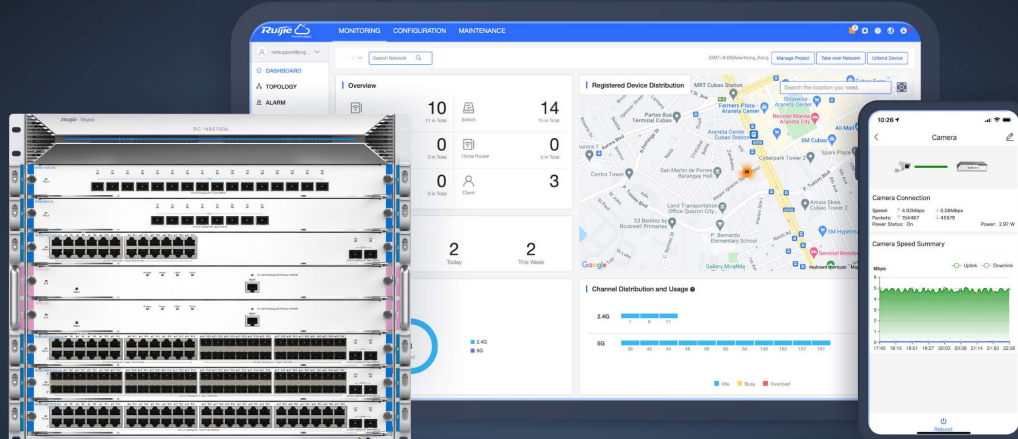
Whole Network Solution Specially Designed for SMB Scenarios

Up to 4000 terminal devices or 2000 CCTV (2mp H.265) can be accessed



Cloud, Make Your Business Easy

- SON, zero touch provisioning to Cloud
- Monitor switch statistics at anytime anywhere
- Configure VLANs on Ruijie Cloud APP
- Easy maintenance, save onsite time and cost



Specifications

Basic

| | |
|-------------------------|---|
| Model | RG-NBS7006 |
| 10/100/1000Base-T ports | 288 * 10/100/1000BASE-T ports (Maximum) |
| SFP ports | 288 * SFP ports (Maximum) |
| SFP+ ports | 96 * SFP+ ports (Maximum) |
| Layer Type | Layer 3 |
| Switching capacity | 1920 Gbps |
| Forwarding rate | 1440 Mpps |
| Packet Buffer | 16 Mbit |
| MAC address table | 32,000 |
| Maximum VLAN Support | 4094 |
| Dimensions (W x D x H) | 442 mm x 410 mm x 396 mm 9U |
| Weight (With package) | 31.25kg |
| MTBF | > 400,000 |
| Warranty | 5 Years |

Layer 2 Features

| | |
|---------------------|------|
| Jumbo Frame | 9216 |
| Flow Control | ✓ |
| STP (IEEE 802.1d) | ✓ |
| RSTP (IEEE 802.1w) | ✓ |
| MSTP (IEEE 802.1s) | - |
| Port Fast | ✓ |
| BPDU Guard | ✓ |
| Errdisable Recovery | ✓ |

Specifications

Layer 2 Features

| | |
|---|------------|
| Model | RG-NBS7006 |
| Max. Aggregation Group | 16 |
| Max. Member per Group | 8 |
| Unknow Unicast Storm Suppression | ✓ |
| Multicast / Broadcast Storm Suppression | ✓ |
| Many-to-One Mirroring | ✓ |
| VLAN Range | 1-4094 |
| Port-based VLAN | ✓ |
| MAC-based VLAN | ✓ |
| IP-based VLAN | ✓ |
| Voice VLAN | ✓ |
| RLDP | ✓ |
| LLDP / LLDP-MED | ✓ |
| Cable Testing | ✓ |
| IGMP Snooping v1/v2/v3 | ✓ |

Software Features

| | |
|------------------------|------|
| Ping | ✓ |
| Traceroute | ✓ |
| ACL Entries | 1900 |
| Static Routing | ✓ |
| IP Standard ACL | ✓ |
| MAC-based Extended ACL | ✓ |

Specifications

Software Features

| Model | RG-NBS7006 |
|--|--------------|
| IP-based Extended ACL | ✓ |
| Port-based Rate Limit (Ingress/Egress) | ✓ |
| SNMP v1/v2c/v3 | ✓ |
| OSPF | ✓ |
| RIP | ✓ |
| IPv6 | ✓ |
| SNMP | ✓ |
| 802.1X | ✓ |
| DHCP Server | ✓ |
| Web Management | ✓ |
| Management IP | 10.44.77.200 |
| HTTP/HTTPS | ✓ |
| Cloud Management | ✓ |
| SON (Self-Organizing Network) with IP | ✓ |
| Camera Recognition | ✓ |
| Loop Prevention | ✓ |
| Loop Notification | ✓ |
| PoE Usage Alarm | - |
| Protection Port | ✓ |
| IP Source Guard | ✓ |
| Anti-ARP Spoofing | ✓ |

Specifications

Software Features

| | |
|---------------|------------|
| Model | RG-NBS7006 |
| DHCP Snooping | ✓ |
| DHCP Client | ✓ |

Physical Features

| | |
|-------------------------------|--------------------------------|
| Reset Button | rear |
| Cable Hot-swappable | ✓ |
| Power Supply Slot | 4 |
| Power Supplies | modular power supply |
| Power Consumption | ≤ 100W |
| EEE | ✓ |
| Fan | 2 |
| Airflow | Left/right-to-Rear |
| Fan Adaptive Speed Adjustment | ✓ |
| Acoustic Noise | < 55dB |
| Operating Temperature | 0°C to 50°C (32°F to 122°F) |
| Storage Temperature | -40°C to 70°C (-40°F to 158°F) |
| Operating Humidity | 10% to 90% RH |
| Storage Humidity | 5% to 95% RH |
| Port Surge | 6 kV |
| Operating Altitude (meters) | -500 to 5000 |
| Certificate | CE, RoHS |

Power Supply and Fan

| | |
|--------------|---|
| RG-PA600I-FS | RG-NBS7006 Power Module (support redundancy,AC, 600W) |
| M7006-FAN | NBS7006-FAN |

Line Card & Service Module

| | |
|-----------------------|--|
| M7000-24GT2XS-EA | 24 Gigabit Ethernet copper port (RJ45) + 2 10-gigabit Ethernet fiber port (SFP+,LC) |
| M7000-48GT2XS-EA | 48 Gigabit Ethernet copper port (RJ45) + 2-port 10-gigabit Ethernet fiber port (SFP+,LC) |
| M7000-24SFP2XS-EA | 24 Gigabit fiber port (SFP,LC) + 2 10-Gigabit Ethernet fiber port (SFP+,LC) |
| M7000-48SFP2XS-EA | 48 Gigabit fiber port (SFP,LC) + 2 10-Gigabit Ethernet fiber port (SFP+,LC) |
| M7000-24GT24SFP2XS-EA | 24 Gigabit Ethernet copper port (RJ45)+ 24 Gigabit fiber port (SFP,LC)+ 2 10-gigabit Ethernet fiber port (SFP+,LC) |
| M7000-8XS-EA | 8 10-Gigabit Ethernet fiber port (SFP+,LC) |
| M7000-16XS-EA | 16 10-gigabit Ethernet fiber port (SFP+,LC) |
| M7006-CM | Supervisor Engine Module |

Package Contents

| | |
|----------------------------------|-----------------------------|
| Device | RG-NBS7006 |
| Mounting Bracket | 2 |
| Foot pad | 4 |
| Power supply | modular power supply |
| Quick Start Guide | 1 |
| Warranty Card | 1 |
| Accessories | Screws * 8 |
| Package Weight | 31.25 kg |
| Package Dimension (w x d x h) | 442 mm x 410 mm x 396 mm 9U |

Ruijie | Rcycc

 **Redefine your easy network**

Copyright ©2000-2023 Ruijie Networks Co., Ltd. All rights reserved.

No part of this document may be reproduced or transmitted in any form or any means without prior written consent of Ruijie Networks Co., Ltd.

Notice

This content is applicable only to regions outside the China mainland. Ruijie Networks Co., Ltd. reserves the right to interpret this content.

The information contained herein is subject to change without notice. Nothing herein should be construed as constituting an additional warranty. Ruijie Networks Co., Ltd. shall not be liable for technical or editorial errors or omissions contained herein.



Ruijie Networks Co., Ltd.
Building 19, Juyuanzhou Industrial Park, No.618
Jinshan Road, Cangshan District, Fuzhou, Fujian, China
Website: <https://www.ruijienetworks.com>